

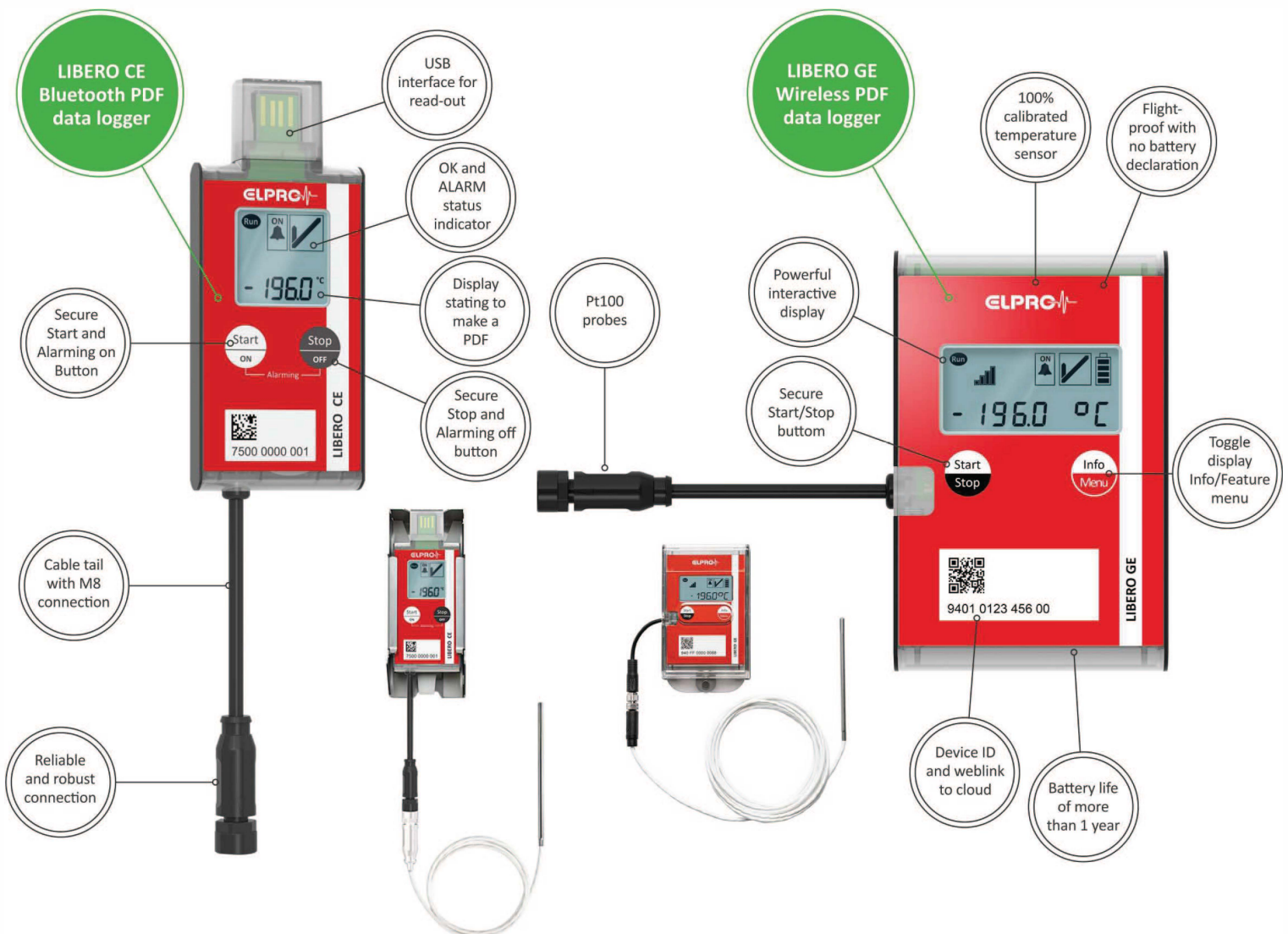


VAPOR SHIPPER

Monitoring Kit Installation Service

Bluetooth LIBERO CE and wireless LIBERO GE PDF data loggers with external sensors.

Ensure your valuable cryogenic shipments remain safe and compliant during transport with a temperature data monitoring kit. Complete with preconfigured, ELPRO LIBERO CE or GE multi-use data loggers, each device has a battery life of 14 months up to 3 years.* Choose from Bluetooth® Low Energy-enabled or real-time enabled devices with a measurement range of $-200^{\circ}\text{C}.. +400^{\circ}\text{C}.$ Each kit includes a precision PT100 braided wire sensor, secure M8 connector, and durable steel bracket or case to protect your device. Fast and easy, turnkey installation includes preconfigured data loggers. (*certain conditions apply)



we prove it.

SWISS QUALITY



Kits include:

- > Compliant installation
- > Custom pre-configured bluetooth or real-time data logger
- > Braided temperature probe
- > Secure bracket or case
- > 2-Point lab calibration certificate

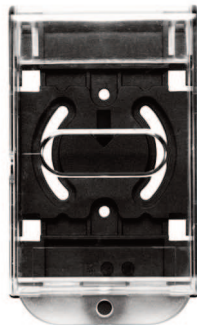
Technical Specifications LIBERO CE BLE

Type Usage	PDF Data Logger Multiple use
Measurement parameters	Temperature
Type of probe	Pt100 probe (4-wire measuring technique), max. cable length 3 m (118.1 inch), requires M8 connector
Measurement range	-200 °C..+400 °C
Measurement accuracy	±1.4 °C in the range of -200.0 °C..-100.1 °C ±0.5 °C in the range of +25.1 °C..+100.0 °C ±1.0 °C in the range of -100.0 °C..-50.1 °C ±0.7 °C in the range of +100.1 °C..+200.0 °C ±0.4 °C in the range of -50.0 °C..-10.1 °C ±1.1 °C in the range of +200.1 °C..+400.0 °C ±0.3 °C in the range of -10.0 °C..+25.0 °C
Memory capacity	75.500 measurement values per data logger
Battery life	14 months up to 3 years (depending on usage of Bluetooth® interface and ambient temperature below 0 °C)
Configurable alarms	8 temperature alarm zones with single or cumulative delays, Alarm on MKT, Alarm on duration/run time
Dimensions Material IP Code	95 × 41 × 11 mm (3.74 x 1.61 x 0.43 inch) ABS/PC plastic material IP 54
Certificates	Validation

NOTE: For calibration certificate standard tolerances, see Section 3.1 of the ELPRO GLOBAL SERVICE DESCRIPTION



LIBERO CE Stainless Steel Bracket
For connection of external probes with terminals for PT100 (3-wire) for LIBERO



LIBERO GE Bracket
Durable transparent two-part case for mounting of all LIBERO Gx and ECOLOG-PRO xG devices

Technical Specifications LIBERO GE Real-Time

Type Usage	Real-time PDF Data Logger Multiple use
Measurement parameters	Temperature
Type of probe	Pt100 probe (4-wire measuring technique), max. cable length 3 m (118.1 inch), requires M8 connector
Measurement range	-200 °C..+400 °C
Measurement accuracy	±1.4 °C in the range of -200.0 °C..-100.1 °C ±0.5 °C in the range of +25.1 °C..+100.0 °C ±1.0 °C in the range of -100.0 °C..-50.1 °C ±0.7 °C in the range of +100.1 °C..+200.0 °C ±0.4 °C in the range of -50.0 °C..-10.1 °C ±1.1 °C in the range of +200.1 °C..+400.0 °C ±0.3 °C in the range of -10.0 °C..+25.0 °C
Memory capacity	75.500 measurement values per data logger
Battery life	14 months up to 3 years (depending on usage of Bluetooth® interface and ambient temperature below 0 °C)
Alarms	Alarm thresholds
Dimensions Material IP Code	95 × 41 × 11 mm (3.74 x 1.61 x 0.43 inch) ABS/PC plastic material IP 54
Certificates	Production qualification / Validation

NOTE: For calibration certificate standard tolerances, see Section 3.1 of the ELPRO GLOBAL SERVICE DESCRIPTION



	Part number	Description
10DX	10DX-ELPCE	10DX necktube core with ELPRO LIBERO CE data logger and temperature probe
	10DX-ELPGE	10DX necktube core with ELPRO LIBERO GE data logger and temperature probe
4D	4D-ELPCE	4D necktube core with ELPRO LIBERO CE data logger and temperature probe
	4D-ELPGE	4D necktube core with ELPRO LIBERO GE data logger and temperature probe
4DX	4DX-ELPCE	4DX necktube core with ELPRO LIBERO CE data logger and temperature probe
	4DX-ELPGE	4DX necktube core with ELPRO LIBERO GE data logger and temperature probe
CX100	CX100-ELPCE	CX100 necktube core with ELPRO LIBERO CE data logger and temperature probe
	CX100-ELPGE	CX100 necktube core with ELPRO LIBERO GE data logger and temperature probe